

TBTI Symposium on European Small-Scale Fisheries and Global Linkages

General Information

The Institute of Social and Political Sciences of the University of La Laguna

The Institute of Social and Political Sciences is located in the Guajara Campus of the University of La Laguna (ULL). The university (www.ull.es) currently has over twenty thousand students and is considered a “Three-continental Excellence Campus” together with the University of Las Palmas de Gran Canaria. This Excellence Campus has as one of its strengths the research developed in Marine Science and Technologies, including, of course, social sciences on marine and fisheries issues. The Campus of Guajara is where the Faculties of Social Sciences and Humanities are located, and the Institute of Social and Political Sciences of ULL. The Institute is an interdisciplinary centre mainly focused on research and postgraduate and PhD programs. Its main research interests revolve around protected areas and fisheries governance, tourism, natural resources management, and small-scale fisheries, among others.

Tenerife Island: San Cristóbal de La Laguna and Santa Cruz de Tenerife cities

Tenerife is one of the seven Canary Islands. They are located off the North-West coast of Africa. Despite this Archipelago having some degree of autonomy on both a political and administrative scale, it is still a region of Spain and an ultra-peripheral region of the European Union. The Canary Islands are located in the UTC/GMT time zone (the same as Portugal and UK) and use the common European currency (Euro, €). Regarding the migration issues that apply in the Canary Archipelago, all European Union citizens are exempted of any visa requirements. However, citizens from other nationalities are urged to check their migration status and corresponding visa requirements in advance, directly in the Spanish diplomatic representations in their country of citizenship and/or residence (see also: <http://goo.gl/uccnJ1>).

The Symposium will take place in two cities: San Cristobal de La Laguna and Santa Cruz de Tenerife. San Cristobal of La Laguna was founded in the XV Century and was the first capital city of the Island. In 1999, La Laguna was declared a UNESCO World Heritage Site, as an example of a “colonial city without a fortified wall”. La Laguna is located at 600 meters above sea level and has a population of ca. 32,000 people, in its urban area.

The city of Santa Cruz de Tenerife is the most populated in the Santa Cruz province (ca. 205,000 people). This province also includes La Gomera, La Palma and El Hierro Islands. The urban area of Santa Cruz de Tenerife faces the sea despite the entire city being surrounded by the *Macizo de Anaga*. This “*Macizo*” (i.e., mountainous feature) is an important protected area that has recently been declared a UNESCO Biosphere Reserve. The average temperature throughout the year in Santa Cruz de Tenerife is ca. 21°C, with an average temperature of 22°C in June. However, due to other geographic features and the wind system present in this region, the temperature can vary from one area to another mainly due to the altitude and the watershed involved.

The event will be co-hosted by the ULL and by the Spanish Oceanographic Institute - Oceanographic Center of Canary Islands. This institute is located 7 km. from the urban area of Santa Cruz de Tenerife, in front of the sea at the inner dock (usually called the “*Dársena Pesquera*”). These facilities are served by public transport bus service (locally known as “*Guaguas*”). This bus service operates regularly along the main traffic routes in Santa Cruz de Tenerife and along the coast. There is indeed one bus stop in front of the Symposium venue (i.e., Bus Stop “*Instituto Oceanográfico*”, #9325). Additionally, close to the Spanish Oceanographic Institute - Oceanographic Center of Canary Islands, there are interesting places like the small-scale fishing community of San Andrés (Bus Stop “*San Andrés*”, #9326), Las Teresitas Beach (Bus Stop

“Las Teresitas”, #9327), and several access routes to the Macizo de Anaga. Additional information about the island, routes and other interesting spots can be explored at <http://www.webtenerife.co.uk>.

How to arrive?

Tenerife has two international airports, with flights coming mainly from mainland Europe. The Reina Sofia International Airport, known as “Tenerife South” (international coding TFS) is 62 km from the city of Santa Cruz de Tenerife. There is a bus service from the airport in the *Guagua (Bus)* No. 111, which goes from/to Santa Cruz de Tenerife-Airport TFS-Santa Cruz de Tenerife. This trip takes around 1 hour and is available daily (Monday-Sunday) and runs frequently (most of the day every 30 minutes, for details see <http://goo.gl/UAOz3x>). The cost of the ticket is around 9.35€ in cash. This airport receives direct flights from many European cities, including a good number of low-cost flights. The cost of a taxi from this airport to Santa Cruz or La Laguna is around 70 €. The main bus station (known as the “*Intercambiador*”) is located in a central part of the Santa Cruz, and arriving there from the airport allows you to connect easily with other areas.

Alternatively, there is the North Tenerife Airport, known as “Los Rodeos” (international coding TFN), which is located 12 km away from Santa Cruz de Tenerife and connected by the TF-5 highway. Along the route TFN-*Intercambiador*-TFN, there are several buses (*Guaguas*, e.g., 102, 107 y 108) operating regularly every day (Monday-Sunday) with varied time-schedules (for details see <http://goo.gl/Thp4e7>). The fares for taxis between the TFN to Santa Cruz are ca. 20 € or to La Laguna ca. 10€.

Additionally, there are many rent-a-car companies offering their services from both airports (TFS and TFN) and some are located in Santa Cruz de Tenerife. If participants select this transport option, the organizers would recommend picking up the car directly from any of the airports’ rent-a-car offices; a previous reservation is highly recommendable. There is plenty of updated information about offers and details on the Airport’s web site (i.e., AENA)(see Tenerife North <http://goo.gl/8VODb1> Tenerife South <http://goo.gl/ph4ZBa>) and the rent-a-car companies in their respective web sites. The website of the public transportation system of Tenerife (i.e., *Transportes Interurbanos de Tenerife, TITSA*, see <http://goo.gl/bFTkIZ>) offers detailed information on the routes, fares, stops, and frequencies offered.

Concerning the transportation during the Symposium

The Symposium organizers will provide a *Guagua* (bus) for the exclusive use of the participants during the duration of the symposium. This *Guagua* will run from a clearly identified location in the center of the city of Santa Cruz de Tenerife (likely to be close to most of the accommodation sites of the participants), to either the Spanish Oceanographic Institute - Oceanographic Center of the Canary Islands or to the ULL, where the sessions will take place. The route between the *Intercambiador* in Santa Cruz de Tenerife and the Spanish Oceanographic Institute is served by Line No. 910 (“*Intercambiador-San Andrés-Playa de las Teresitas*”), which runs parallel to the coast of the city. This route has many stops one of which is directly in front of the Spanish Oceanographic Institute - Oceanographic Center of Canary Islands. This stop is the third from the last stop served by this line, and is called the “Oceanographic Institute” (Stop #9325). This route runs every 10-20 minutes, though during summer season (June-September), there can be delays or schedule modifications due to the high demand of this route from visitors to Las Teresitas Beach. For this reason, if the *Guagua* provided by the organizers is not used, the participants are kindly requested to pay attention to the time schedules and frequencies of the public transportation system in order for them to be at the symposium venue at the event starting time. Taxi fares from Santa Cruz de Tenerife to any of the symposium venues (either to the Spanish Oceanographic Institute or to the ULL) are also affordable.

For all other activities of personal interest of the participants, the organizers recommend the use of the public transportation system, which is an adequate option to move around the island, especially between Santa Cruz de Tenerife and La Laguna.

To get to the ULL campus (Guajara, where the Institute of Social and Political Sciences is located) or to San Cristobal de La Laguna city, the *tranvia* (i.e. the street car) is the transport means recommended. This route starts in front of the main bus station of Santa Cruz de Tenerife (stop *Intercambiador*) and finishes at La Laguna downtown (stop *Trinidad*). In the middle of the route, there is the *Campus Guajara* stop, which is the location of the Institute of Social and Political Sciences. The last stop is very close to the historical center of La Laguna (stop *La Trinidad*).

Public transport fares vary across the island and depend on which route is used. Payment is possible through two mechanisms: one is by cash (using coins or small-denomination banknotes), paid directly to the driver (only possible on buses –*guaguas*-) or, by using the pre-paid “Bono-Bus” system, that costs 15€, 25€, or 50€ (valid on both *guaguas* and trams –*tranvia*-). In this second option, the journey’s fare is deducted from the original value until Bono-Bus is used up (for details see <http://goo.gl/Q0ua6a>). This “Bono-Bus” is the option the organizers recommend to use. In the tram you cannot pay the driver directly, it is compulsory to buy a bono-bus or a ticket for each trip in the automatic machine available at each tram stop, and you need to validate the one-way ticket or bono-bus in the machines inside the tram. Bono-bus is also regularly sold at the main bus or transfer stations.

Accommodation

The city of Santa Cruz de Tenerife has many accommodation options. These range from holiday hotels, apartments, or urban hostels. In general, it can be said that most of them are affordable and the majority offer good quality service, taking into account the price. The rates range from 50€ - 150€ per night per double room. It is important to note that Santa Cruz de Tenerife receives a significant number of tourists every year and accommodation can sometimes be in short supply during some periods. For this reason, we strongly recommend that participants book their accommodation with enough time in advance to avoid overbooking and excessive price increase. There are as well, many options for apartment rentals and other types of accommodation. All this information is available on specialized websites.

About accommodation selection

The symposium organizers recommend some hotels (Table A), which are located in the northern area of Santa Cruz de Tenerife, close to the García Sanabria Park, the meeting point to pick the Symposium Bus – *Guagua*-. They are Iberostar Grand Hotel Mencey, Hotel Taburiente, Hotel Barceló Contemporáneo, and Hotel Príncipe Paz. Additionally, other hotels listed in Table B are also located in Santa Cruz de Tenerife downtown and can be recommended. However, please note that some of them could be some way from the designated meeting point to pick the *Guagua at the* García Sanabria Park. The organizers suggest contacting the “Viajes Sabanda” Tour Operator in case some assistance is needed to make bookings and reservations (<http://www.sabandaviajes.com/ms/> Phone +34 - 922-262012).

The list that follows is for reference of hotels located in Santa Cruz de Tenerife. Some of them could be of interest for symposium participants but should be considered only as a reference, as there are certainly more options that could be found. Please, note that bookings, reservations, payments and other economic transactions will be directly managed by the participants with the accommodation and other service providers, and/or with the suggested travel agency, directly. The symposium organizers will not be responsible for arranging any of the travel-related issues for participants, before, during, neither after the event.

Table A. HOTELS RECOMMENDED BY THE SYMPOSIUM ORGANIZER COMMITTEE

HOTEL NAME (Booking.com link)	CATEGORY	LOCATION	Estimated PRICE (ROOM/NIGHT)	COMENTS	“BOOKING.COM” SCORE (0 – 10) (January 2016)	“TRIP ADVISOR” SCORE (0 -5) (January 2016)
Iberostar Grand Hotel Mencey http://goo.gl/L6DWTk	5*	Downtown	115€	In the surroundings of García Sanabria Park. 8 Km from the Symposium venue. 40 min. walking or bus from the venue. 15 minutes from the symposium venue using the symposium <i>Guagua</i> (Bus)	8,9	4,5
Hotel Taburiente http://goo.gl/9y3R6m	4*	Downtown	78€	In the surroundings of García Sanabria Park. 8 Km from the Symposium venue. 40 min. walking or by-public bus from the venue. 15 minutes from the symposium venue using the symposium <i>Guagua</i> .	8,2	4
Hotel Barceló Santa Cruz Contemporáneo http://goo.gl/reLr09	3*	Downtown	60€	A little farther from the downtown in the surroundings of Sanabria Park. 40 min. walking or by-public bus from the event venue. 15 minutes away from the symposium using the symposium <i>Guagua</i> .	8,0	3,5
Hotel Príncipe Paz http://goo.gl/aQGYGL	3*	Downtown	54€	Just in the downtown, within the pedestrian area, close to Plaza Príncipe. 8 Km away from the Symposium venue. 35 min. walking or by-public bus distance of the event’s venue. Very close to several bus stops where Bus No. 910 runs. 20 minutes away from the symposium venue using the symposium <i>Guagua</i> .	8,4	4

Table B. OTHER HOTELS IN SANTA CRUZ

HOTEL NAME	CATEGORY	LOCATION	Estimated PRICE (DOUBLE ROOM/NIGHT)	COMENTS	“BOOKING.COM” SCORE (0 – 10) (January 2016)	“TRIP ADVISOR” SCORE (0 -5) (January 2016)
NH Tenerife	3*	Downtown	79€	Just in the downtown, within the pedestrian area, close to Plaza de la Candelaria and Plaza de España. 8 Km. from the Symposium venue. 35 min. walking or by-public bus distance from the event’s venue. Very close to the bus stops where the Line 910 runs. 25 minutes from the symposium venue using the symposium <i>Guagua</i> .	8,7	
Hotel Adonis Plaza	3*	Downtown	50€	Just in downtown, close to the pedestrian zone. 8 Km from the Symposium venue and 35 min walking and by-public bus distance of the event’s venue. Very close to several bus stops where Bus No. 910 runs. 15 minutes from the symposium <i>Guagua</i> stop.	7,6	3,5
Hotel Pelinor	2*	Downtown	43€	Just in the downtown, within the pedestrian area, close to Plaza de España. 8 Km from the Symposium venue. 35 min. walking or by-public bus from the event’s venue. Very close to several bus stops where Bus No. 910 runs. 15 minutes from the symposium <i>Guagua</i> stop.	7,1	3
Hotel Adonis Capital	2*	Downtown	42€	Just in the downtown, within the pedestrian area, close to Plaza Candelaria and Plaza de España. 8 Km away from the Symposium venue. 35 min. walking or by-public bus distance of the event’s venue. Very close to several bus stops where Bus No. 910 runs. 10 minutes from the symposium <i>Guagua</i> stop.	7,8	3,5
Hotel Atlántico	2*	Downtown	50€	Just in downtown, within the pedestrian area and Calle del Castillo, which is the main commercial shopping street. 35 min. walking or by-public bus from the event’s venue. Very close to several bus stops where Bus No. 910 runs. 10 minutes away from the symposium <i>Guagua</i> stop.	7,6	3,5
Hotel Náutico	2*	Out of downtown	45€	Located in the Anaga neighbourhood. It is the most distant hotel from the downtown. 7 km. away from the Symposium venue. 35-40 min. walking or by-public bus distance of the event’s venue. 30 minutes from the symposium <i>Guagua</i> stop.	7,5	3,5
Hotel Horizonte	1*	Downtown	39€	Just in downtown, in the Toscal neighborhood. Very close to the pedestrian area. 8 Km from the Symposium venue and 35 min walking or by-public bus from the event’s venue. 10 minutes from the symposium <i>Guagua</i> stop.	7,5	3,5

Where to eat?

The city of Santa Cruz de Tenerife has a very broad gastronomic offer. If your preferences are fish and seafood, a good option close to Santa Cruz is going to the small-scale fishing community of San Andrés or to the Maria Jiménez village. The latter is located between Santa Cruz and the Oceanographic Center of Canary Islands. Both are very close to the symposium venue. In San Andrés a good place to have lunch is the restaurant owned by the *Cofradía* (local fisher's association), located in front of the Las Teresitas beach.

The Santa Cruz de Tenerife downtown is full of bars and open-air terraces, where a great availability of local and international food is offered. There is also a great variety of international and traditional Canarian food around the pedestrian area, which is usually called "*zona centro*". In the surroundings of Calle de la Noria there are a great variety of restaurants located in terraces within some of the most historical houses of the city, which have been declared as heritage value. In the Rambla de Santa Cruz in the surroundings and in front of Hotel Mencey, there are also excellent quality restaurants of Spanish and Mediterranean food. Additionally, La Laguna offers charming scenery to have a walk through its pedestrian area and to try one of its many and diverse gastronomic offers. The *tranvía* direct route from Santa Cruz to La Laguna takes approximately 30 min. and is a "must" visit regarding the cultural and gastronomic aspects of your visit to Tenerife. Later, the organizers will provide a list of recommended places to taste the best gastronomic offer in Santa Cruz de Tenerife and in La Laguna.

Another recommended visit is the Municipal Market or *Recova* of Santa Cruz (locally known as *Nuestra Señora de Africa*). This is a good place to purchase local products, and there is also a great variety of fish and sea food, which are also served *in situ* by local food-providers. It has to be noted that most of the fresh fish sold in this market comes from fishing grounds off the coast of Africa. In case the participants would like to get fresh local fish, we recommend choosing sardine, horse-mackerel, or king mackerel. On Sundays, there is a "*Rastro*" (a flea market) in the surroundings of the main market.

Places of interest

In the Santa Cruz de Tenerife city, there are many options for those interested in beach-related, other nature and outdoor related activities (like Las Teresitas beach, San Andrés village, and the *Macizo de Anaga*). There are also many culture-related offers in the city like theatres, museums, and other types of attractions with diverse interest for the visitors. One of these sites is the "Museum of Nature and Humankind", which is located in the area surrounding the Municipal Market. This museum contains, for instance, interesting exhibits of mummies from the ancient inhabitants of Tenerife, called "*Guanches*". There are also funeral grave goods, settlement objects, and ceramic pieces from these ancient times. Additionally, there are varied samples of representative local ecology, flora and fauna.

Only a few kilometres away and served by tram Line 1, there is the old city of San Cristobal de La Laguna, which is well worth visiting. This city was founded in 1496 by Alonso Fernández de Lugo, on behalf of the Castilla Crown, even before the battles with the *Guanches* for the disputed territory had been resolved. La Laguna was the first city built in Tenerife by Spaniards and remained as its capital city for 300 years. Due to this status, its buildings combine different architectural styles, with influence of the governing groups, wealthy families, and the Catholic Church. La Laguna is home for one of the History and Anthropology Museum of Tenerife, the Lecaro's House (see <http://goo.gl/euGvHi>). It can also be interesting to visit the Casa de Carta Museum (<http://goo.gl/fgwu1N>).

Other activities

In general, Tenerife has a wide range of leisure options. During the symposium time, the organizers have designed varied activities that will be detailed in additional documentation. If you require more information about other activities, please visit the Tourism Office official site (<http://www.webtenerife.co.uk>), which is available for your consultation and is in various languages.

Other practical information and recommendations

Due to the high variability of the average temperature of Santa Cruz de Tenerife city, and despite its pleasant climate, it is strongly recommended to pay attention to the weather variations in the period when the symposium will take place. For instance, the sun radiation (especially during noon) is high, therefore sun protection (hats, caps, sun cream) is highly recommended, also in the vicinity of the facilities of the Spanish Oceanographic Institute - Oceanographic Center of Canary Islands, where limited protection against sun radiation is found. This also applies during the outdoor and field-based activities, planned during the event.

Contacts

Viajes Sabanda

Address: Calle Heraclio Sánchez, 27, 38204 La Laguna

Telephone: (+34) 922 262 012/090

Web: <http://www.sabandaviajes.com>

Email: beatrizmartos@sabandaviajes.com

Instituto Universitario de Ciencias Políticas y Sociales (Institute of Social and Political Sciences)

Address: Camino la Hornera s/n 3825 San Cristóbal de La Laguna. Campus Guajara, Facultad de Ciencias Políticas, Sociales y de la Comunicación. Office D-02

Telephone: (+34)) 922 31 73 08 – 922 31 8962

E-mail: jpascual@ull.es

Web: www.ull.es

IEO- Centro Oceanográfico de Canarias

Address: Vía Espaldón, Dársena pesquera, Parcela 8, 38180, Santa Cruz de Tenerife

Telephone: (+34) 922 54 95 54

Web: Instituto Español de Oceanografía: <http://www.ieo.es/>

Aeropuerto de Tenerife Sur (TFS)

Address: 38610 Granadilla de Abona (Tenerife)

Telephone: 902 404 704 / (+34) 91 321 10 00.

Web: <http://www.aena.es/csee/Satellite/Aeropuerto-Tenerife-Sur/es/Inicio.html>

e-mail: informaciontfs@aena.es

Aeropuerto de Tenerife Norte (TFN)

Address: 38297 La Laguna (Tenerife)

Telephone: 902 404 704 / (+34) 91 321 10 00

Web: <http://www.aena.es/csee/Satellite/Aeropuerto-Tenerife-Norte/es/Inicio.html>

e-mail: tfn.aeropuerto@aena.es

TITSA (Transportes Urbanos de Tenerife)

General Info (timeschedules, fares): (+34) 922531300

Web: <http://www.titsa.com/>

Metro de Tenerife

Telephone: 900 700 750 / 900 700 751

Web: <http://metrotenerife.com/>

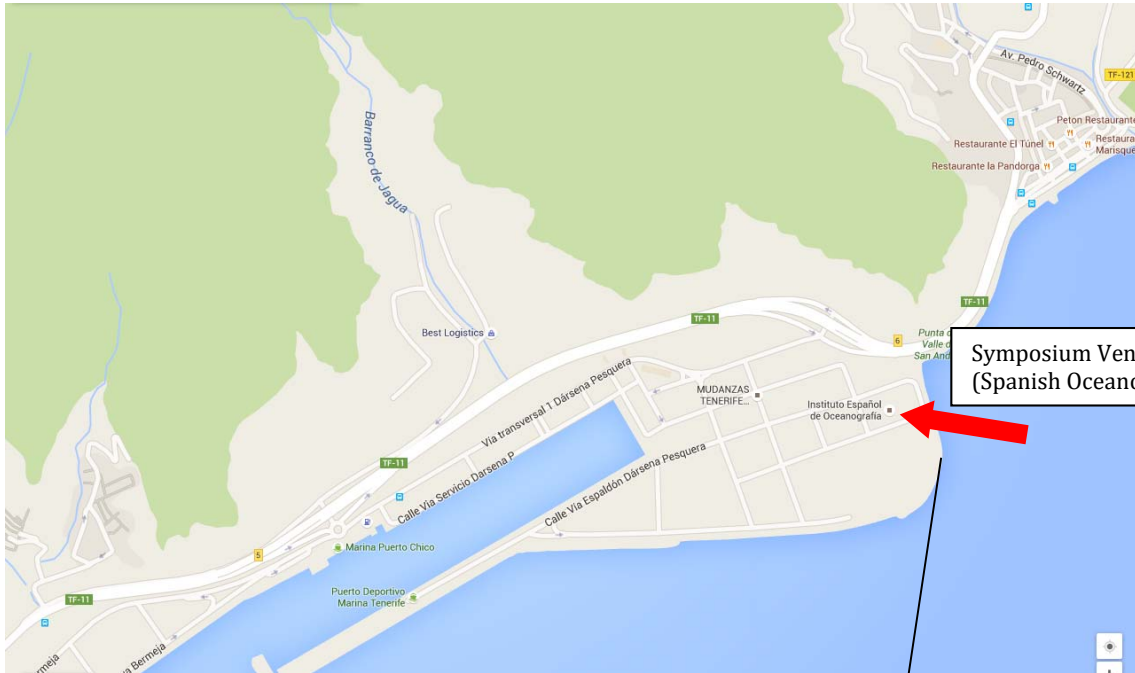
Tourism Office of Tenerife

Web: <http://www.webtenerife.com/>

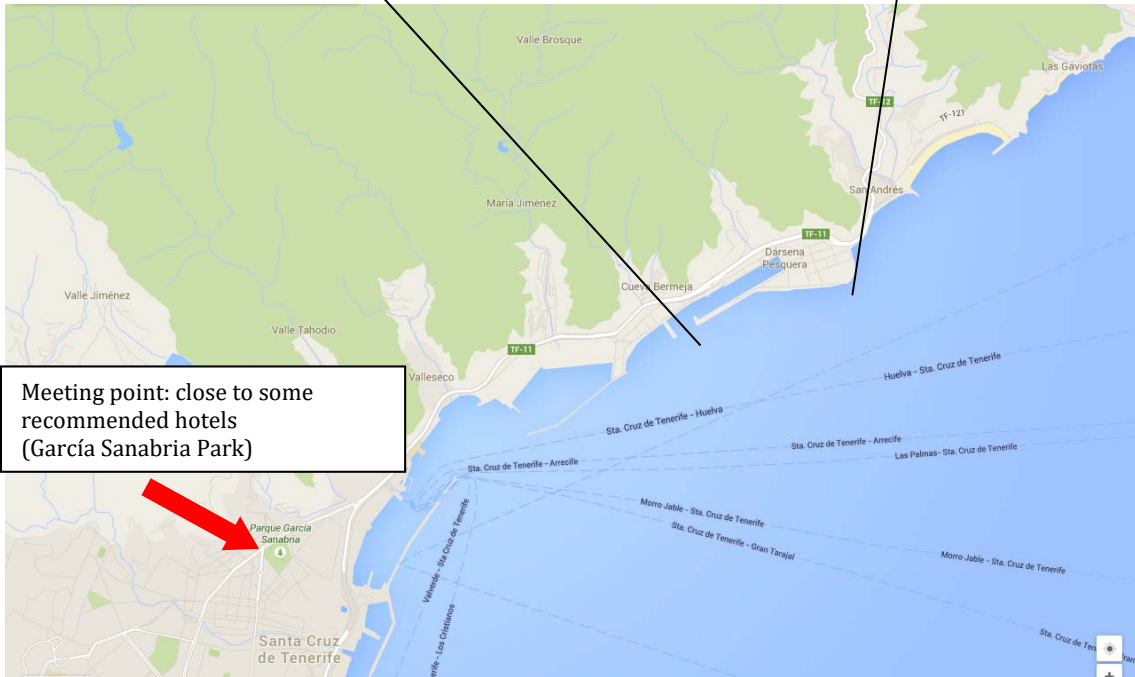
National Meteorological Agency

Web: <http://www.aemet.es>

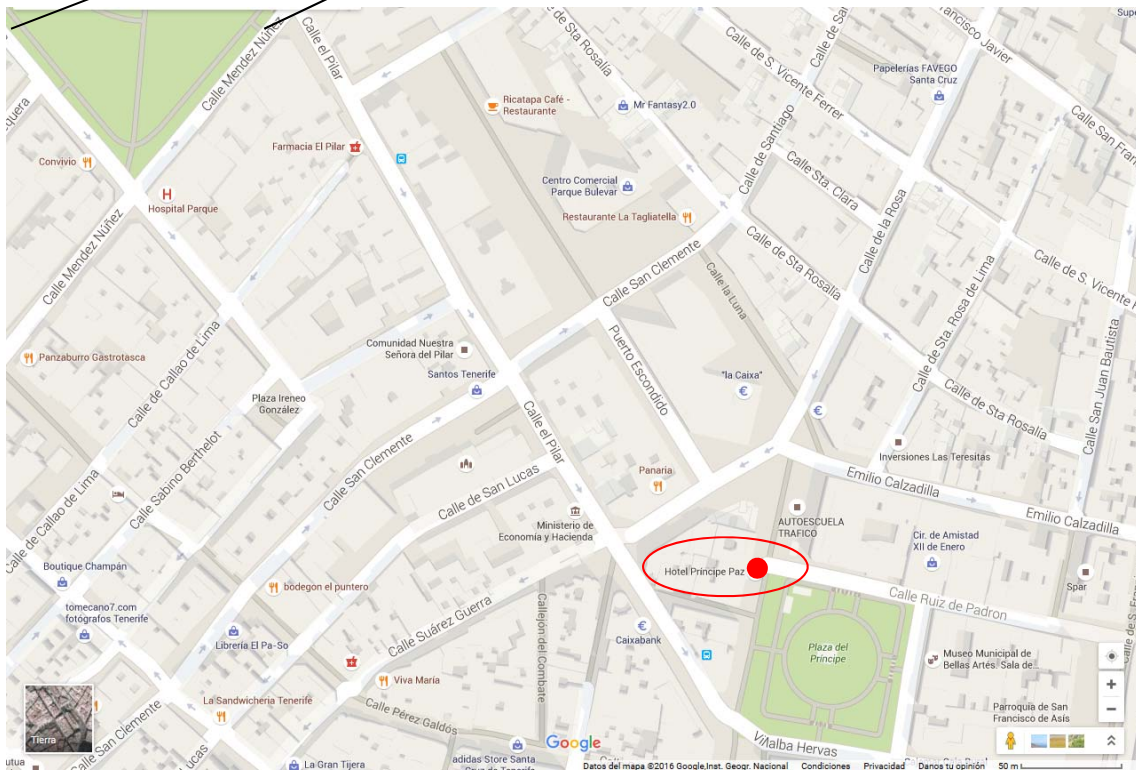
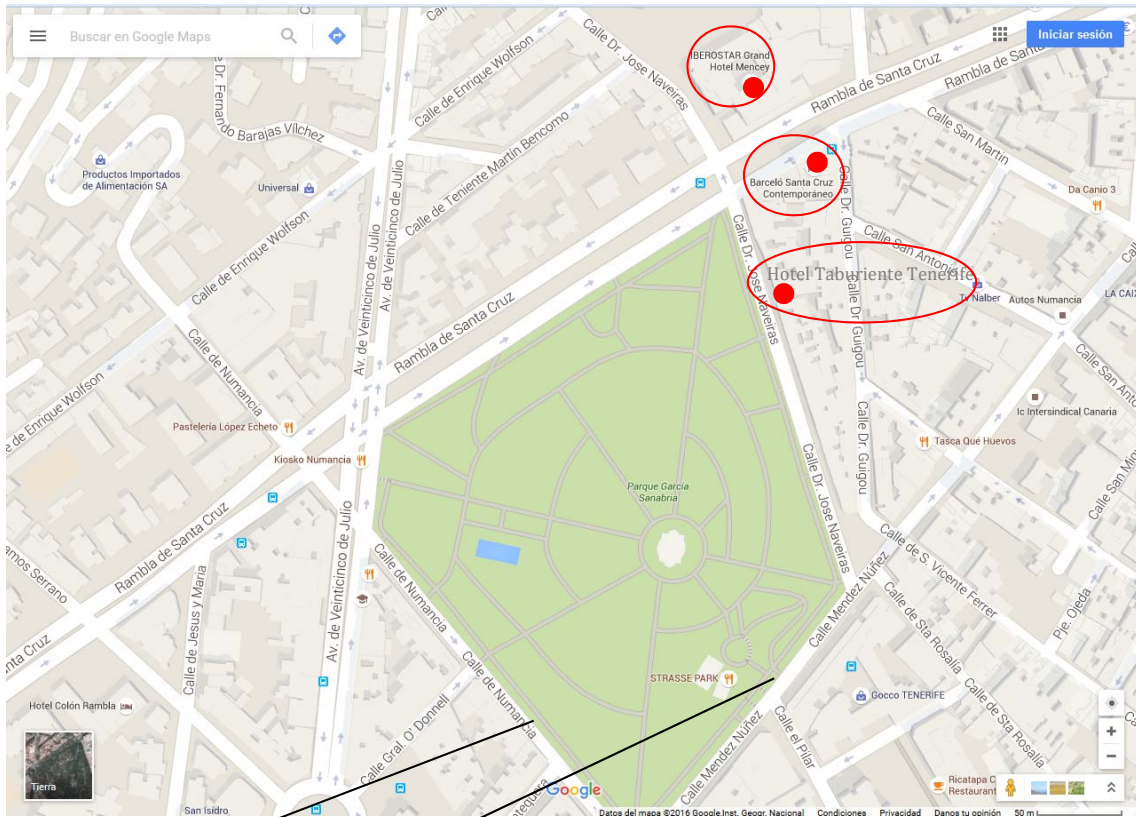
Venue and other maps



**Symposium Venue
(Spanish Oceanographic Institute)**



**Meeting point: close to some
recommended hotels
(García Sanabria Park)**



Electrical adapter plug

Simplest



More complex

